

“DAIHAN” WiseShake® SHO Digital Orbital Shaker

With Programmable Digital Feedback Control System, 10~300 rpm, “PL insurance”, “CE-Certificate”

Specification			
Model	SHO-1D	SHO-2D	
Motor	Brushless DC Motor		
Dimension (w×d×h mm)	250×330×150	400×480×160	
Base Platform Size (mm)	230×230	350×350	
Max. Load (kg)	8	10	
Amplitude of Rotation (mm)	10, 15, 20 Available. (15 as Factory default)	20, 30, 40 Available. (30 as Factory default)	
Speed Range (rpm)	10 ~ 300		
Controller	Programmable Digital Feedback Controller with Jog-Shuttle Switch (Turn + Push)		
Program Function	10 Steps, 6 Programs		
Display	Digital LCD with Back-Light Function		
Platform	Universal Platform for various Shapes & Size of Flask		
Capacity of Flask Holder	FH100	9 ea	20 ea
	FH250	7 ea	16 ea
	FH500	4 ea	9 ea
Holder	Durable & Flexible Plastic Flask holder		
Safety Device	Over Load Protector for motor		
Weight (kg)	14	20	
Others	Smooth Start and Change of the Stirring Speed for stable running Storage Function (Program, RPM, Timer) Locking Mode (Jog-Shuttle Input disabled) Alarm (Error Status and Timer-end)		
Power Supply*	Free Voltage (AC 80V~240V, 50/60Hz)		

* Other Specifications are available upon customer's request.

Ordering Information

DH.WSO04010 Digital Orbital Shaker, SHO-1D, without Platform
DH.WSO04012 , SHO-2D, without Platform

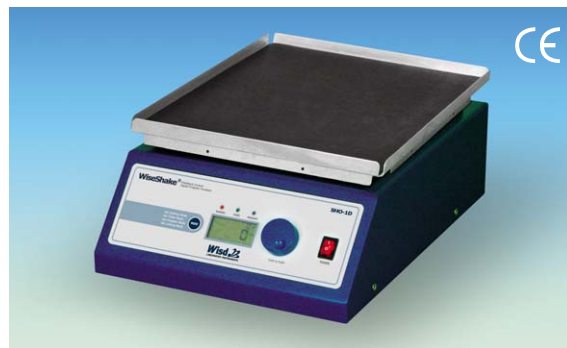
Optional Accessories

DH.WSO504100 Universal Platform for SHO-1D, SP100, w230×d230mm
DH.WSO504110 Rubber Mat Platform for SHO-1D, SP110, w270×d270mm
DH.WSO504200 Universal Platform for SHO-2D, SP200, w350×d350mm
DH.WSO504210 Rubber Mat Platform for SHO-2D, SP210, w370×d370mm
DH.WIS504030 Flask Holder, FH100, 50~100ml
DH.WIS504035 , FH250, 200~300ml
DH.WIS504040 , FH500, 500~1000ml

Patented Control System

(No. 10-0554098)

1 or 2 Mode Buttons + Jog Shuttle Switch
Realize “Easy to Use”



SHO-1D with Rubber Mat Platform (SP110)



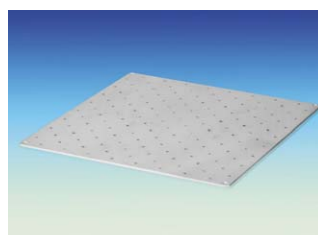
SHO-2D with Universal Platform (SP200)

Applications & Features

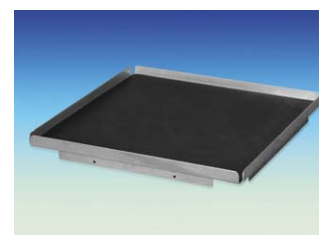
- Ideal for Culturing Cells to Hybridization, Staining and Destaining Gels, and Combinatorial Chemistry.
- Optimal Platform Rotation for Intensive Mixing
- Brushless DC motor (Low Noise & Long Life Cycle)
- High Precision Digital Rotation Speed Control
- Programmable operation mode supported
- Digital LCD with Back-Light Function
- Convenient Setting of Timer and Speed using Jog Shuttle Switch (Patent pending)
- Smooth Start and Change of the Shaking Speed
- Universal Platform for Easy and Fast Fixation of Any Kind Flasks and Bottles (Option)
- Storage function, Alarm & Over-Load Protection
- Locking Mode supported for Experimental Safety (Input to Jog-Shuttle can be disabled)
- Variety of Optional Accessories are available
- PL (Product Liability) Insurance



Flask Holders
(FH500, FH250 & FH100)



Universal Platform
(SP100 / SP200)



Rubber Mat Platform
(SP110 / SP210)